



# Mohammad Al Jarrallah

Equipment & Petroleum Services Company W.L.L.  
KUWAIT | SAUDI ARABIA | BAHRAIN | QATAR

■ HEAVY LIFT PROFILE



## **INTRODUCTION**

The name of **Mohammad Salem Jarrallah Al Marri** is on the peak in business of Transportation around Kuwait for the past 34 years. Mohammad Al Jarrallah appeared in Transport world as his first establishment “Mohammad Al-Jarrallah Goods Transport” in 1989.

In 2014 **Mohammad Al Jarrallah Equipment and Petroleum Services Company W.L.L.** & Mohammad Al Jarrallah Transport and Logistics Services W.L.L. was established. MJ. is a member of IADC & approved ISO 14001:2015 (The Environmental Management System), ISO 9001:2008 The Quality Management System, OHSAS 18001:2007 (The Occupational Health and Safety Management) certified company.

Mohammad Al Jarrallah Equipment and Petroleum Services Company W.L.L. is an expert when it comes to RIG Moves, Heavy Lift Transportation, Jacking & Skidding. Custom Clearance, Freight Forwarding, Providing TOTAL Logistic & Lifting Services to drilling contractors and operators by





Moving their land RIG, Camp from one drill site to another. Rigs are disassembled, transported and assembled in an efficient and safe way by experienced rig move crews, reducing down time to a minimum.

MJEPS Company owns an extensive fleet of road transport and lifting assets which can all be mobilized to carry out a rig move very efficiently. This includes Kenworth Trucks, Cranes, Forklift, Trailers, (Low bed, High bed & Drop Deck), & Heavy Rigging equipment. By combining the expertise of MJ. you will benefit from our 'door-to-door' service. In more remote area's experienced and certified operators are used for lifting and transportation, all with a proven track record.

MJEPS Having a very strong safety record and strong reputation with the clients world wide.



Mohammed AlJarrallah



GLA  
Gulf Logistics & Assets  
Mohammad Al-Jarrallah Equipment and  
Petroleum Services Company W.L.L.  
Membership ID: 158707  
www.gla.ae

# Our Services

- **Rig Movements within a country (well to well)**  
**Mobilization of land rigs within GCC by road / overseas / by sea**
- **Shipping, Transportation, Logistics & Freight Forwarding**
- **Custom Clearance Brokerage at Air Ports / Sea Ports / Borders**
- **Heavy Lift and Project Cargo (ODC / OWC) Services**
- **Rental of Equipment Services**
- **Warehousing & Distribution / Supply Chain Management**
- **Safety Management**
- **Jacking, Rolling & Skidding**
- **International Transportation (GCC)**
- **Civil Work**

## Rig moved by MJ.



Our Team is constantly committed to adhering the oilfield highest standards, as well as our own high standard of delivering quality, timely results.

We are ISO certified company. Our experts have experience in moving RIGS from any origin to final destination (Globally) which include:

- Inspection Survey
- Shipping Plan
- Documentation
- Loading
- Packing and Securing
- Safety

Mohammed AlJarrallah

GLA  
 Mohammad Al-Jarrallah Equipment and  
 Petroleum Services Company W.L.L.  
 Membership ID: 156797  
 www.gla.com



## **RIG MOVE BY MJ.**

MJ. Rig move services is specialized and is far excellent in oil and gas logistics, begins with safety, planning and performance around the key equipment for a customized logistics solution. Our 24x7 personal commitment to oil and gas logistics service needs to include not only transport service but include Drilling rig move, Super Rig Move, Work Over, Casing, Heavy Haulage. Our team's knowledge and expertise of oil and gas domain equipment and supplies, rigs or packaged goods, and heavy lift transports are delivered where and when you need .



## OUR RIG MOVE CAPACITY:

- ▶ Pulling Unit - 250 HP to 650 HP
- ▶ Work Over - 250 HP to 750 HP
- ▶ Drilling Rigs - 750 HP to 2000 HP
- ▶ Deep Drilling Rigs - Up to 3000 HP





## Rig Mast moved by MJ.



## OUR EQUIPMENTS AND FLEET DETAILS:

We at Mohammad Al Jarrallah Equipment and Petroleum Services Company W.L.L. has been providing Drilling companies, construction, industrial companies, with rental heavy equipment's. Our reliable service and dedication have helped our Clients to get their job done efficiently, safely and timely.





The company features a diverse and specialized fleet of heavy equipments, mobile cranes and a full range of heavy equipment that includes:

- Trailers (Lowbed, Flatbed, Drop Deck and Extendable up to 70m)
- Multi Axle lines with Heavy Lift Prime movers
- Cranes (Mobile, RT & Crawler)
- Kenworth & Peterbilt Trucks
- Boom Truck
- Wheel Loaders
- Tankers (Diesel & Water)
- Graders
- Dump Trucks
- Excavator
- Dump Trucks
- Fork Lifts
- Bobcat
- JCB
- Stackers
- Escort Vehicles (for Over Dimensional & Over Weight Cargos)
- Scissor Lift (Electric & Diesel)
- Heavy Duty Power Packs
- Jacking & Skidding

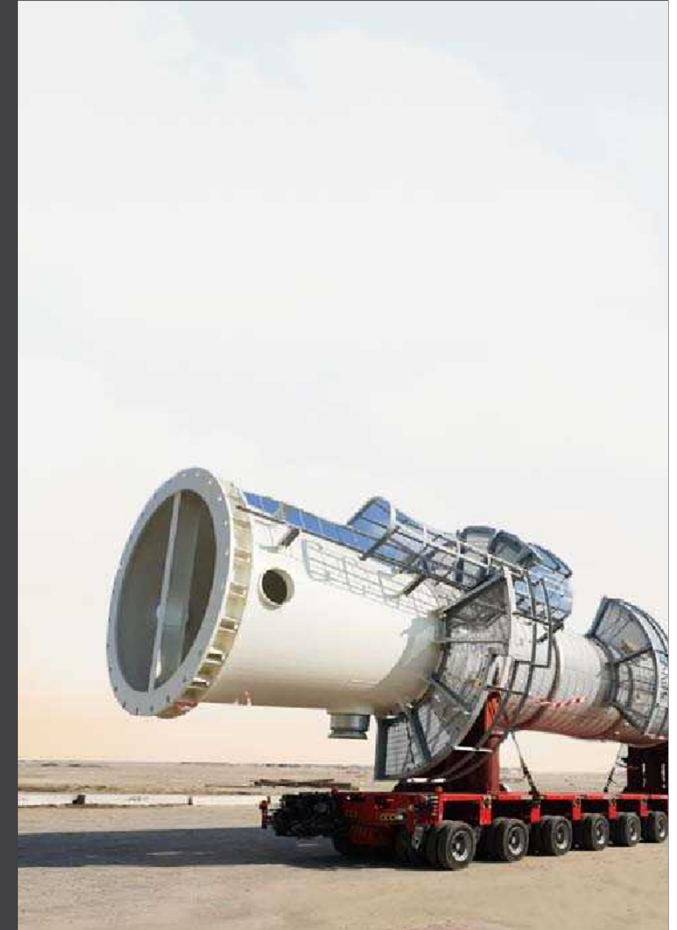


## Heavy Haulage

MJ. Prides itself as having one of the most advanced Heavy Haul fleets available. MJ has specialized over the road transport equipment capable of completing any task on hand. Our knowledgeable crews ensure loads are following all regulations.

We can provide a solution for any of your heavy transport needs including Jacking & Skidding.

In addition, We have specialized Multi Axle lines with Heavy Lift Prime movers, Turn Tables, Bolster, Spacers, Lowbed, Extendable Lowbed, Drop Deck and Flatbed trailers.



# Heavy Haulage Projects by MJ.



# Heavy Haulage Projects by MJ.



# Heavy Haulage Projects by MJ.



# Heavy Haulage Projects by MJ.





# Heavy Haulage Projects by MJ.



# Heavy Haulage Projects by MJ.



# Heavy Haulage Projects by MJ.



# Heavy Haulage Projects by MJ.



# Heavy Haulage Projects by MJ.



# Heavy Haulage Projects by MJ.



# Heavy Haulage Projects by MJ.



# Heavy Haulage Projects by MJ.





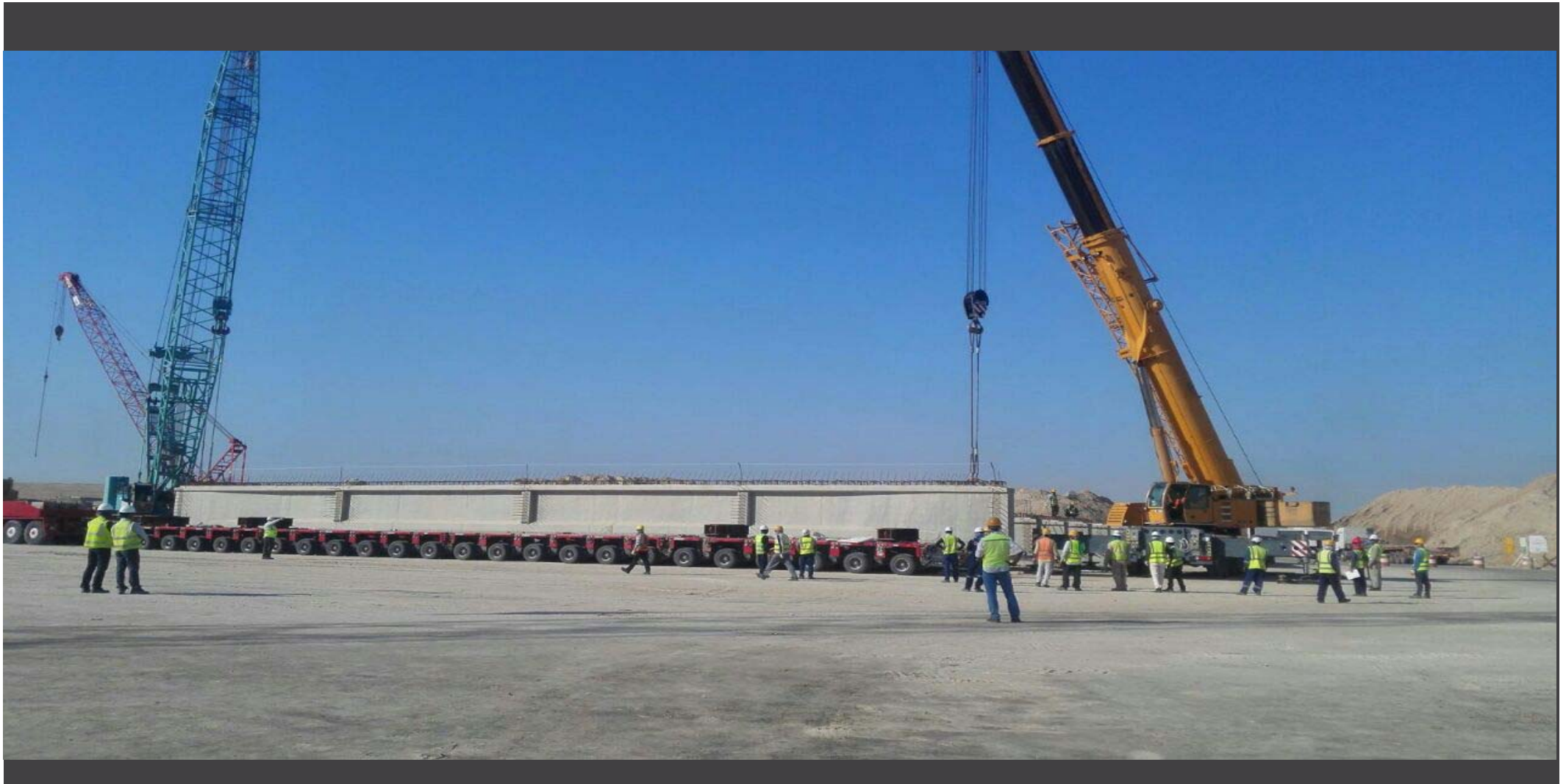
# Heavy Haulage Projects by MJ.



# Heavy Haulage Projects by MJ.



# Heavy Haulage Projects by MJ.



# Heavy Haulage Projects by MJ.



## Jacking & Skidding

Due to space limitations on Project Site, a crane is not constantly an option on site. In such cases, even the largest objects can be handled by Jacking them up and Skidding Cargo into place along rails, rollers.

We Operate a multi-functional synchronous hydraulic heavy lift jacking system capable of monitoring the piston of the load between the four jacks to within one mm tolerance. This innovative hydraulic equipment allows us to raise and slide industrial machinery such as Transformer, Chillers, Filters in a controlled manner, indoors or outdoors / inside basement and on floors.

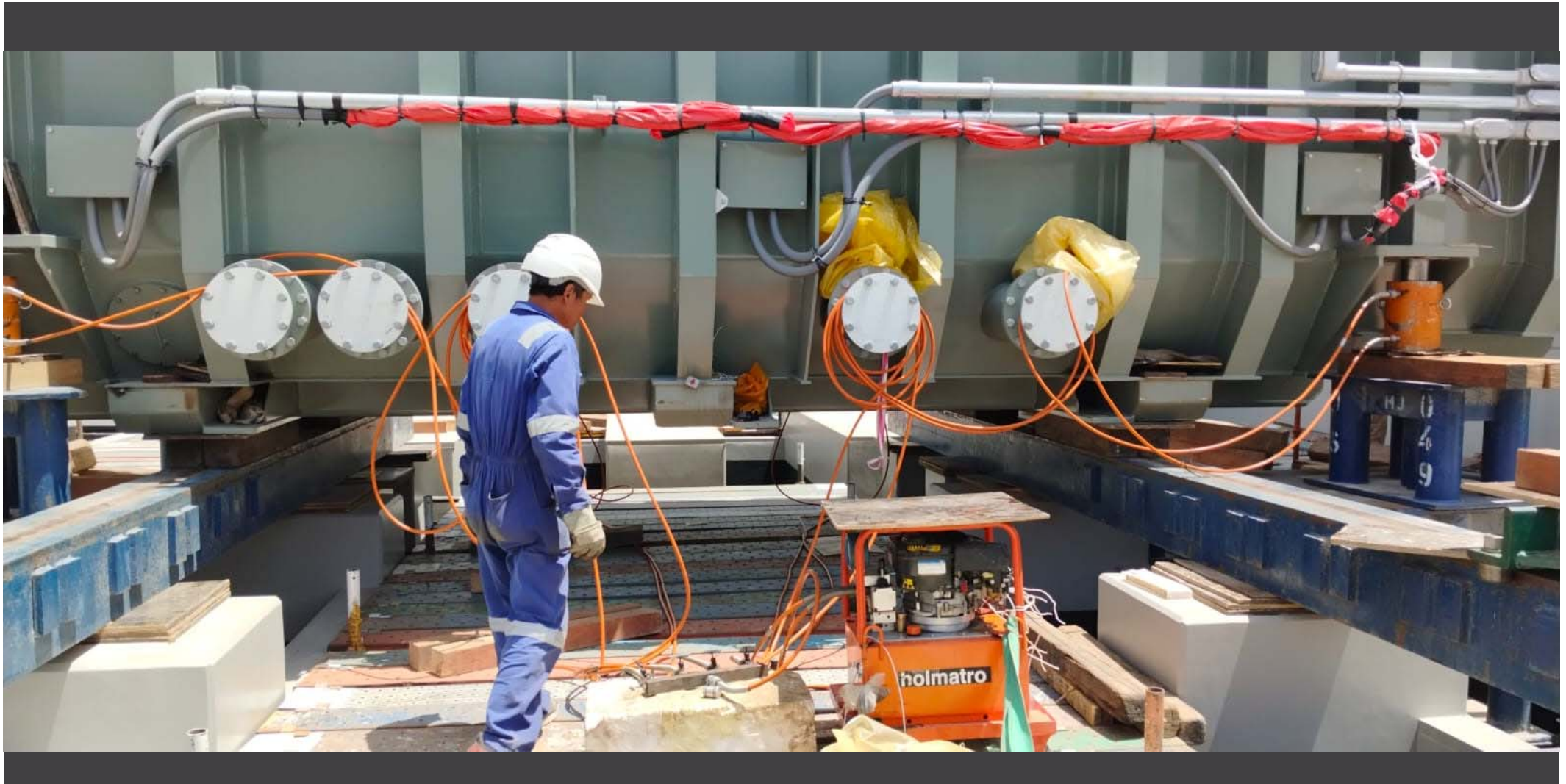
With the option of jacking to lift and lower and skidding to push and pull, we can load directly to trailers or relocate industrial machinery such as transformers, Chillers, Filters and components in confined spaces.

MJs Highly experienced team has served some of the most reputed companies in the Power, Energy, Oil, Gas & Petrochemical Industries in the region.

# Jacking & Skidding by MJ.



# Heavy Haulage Projects by MJ.



# Jacking & Skidding Projects by MJ.





# Jacking & Skidding Projects by MJ.



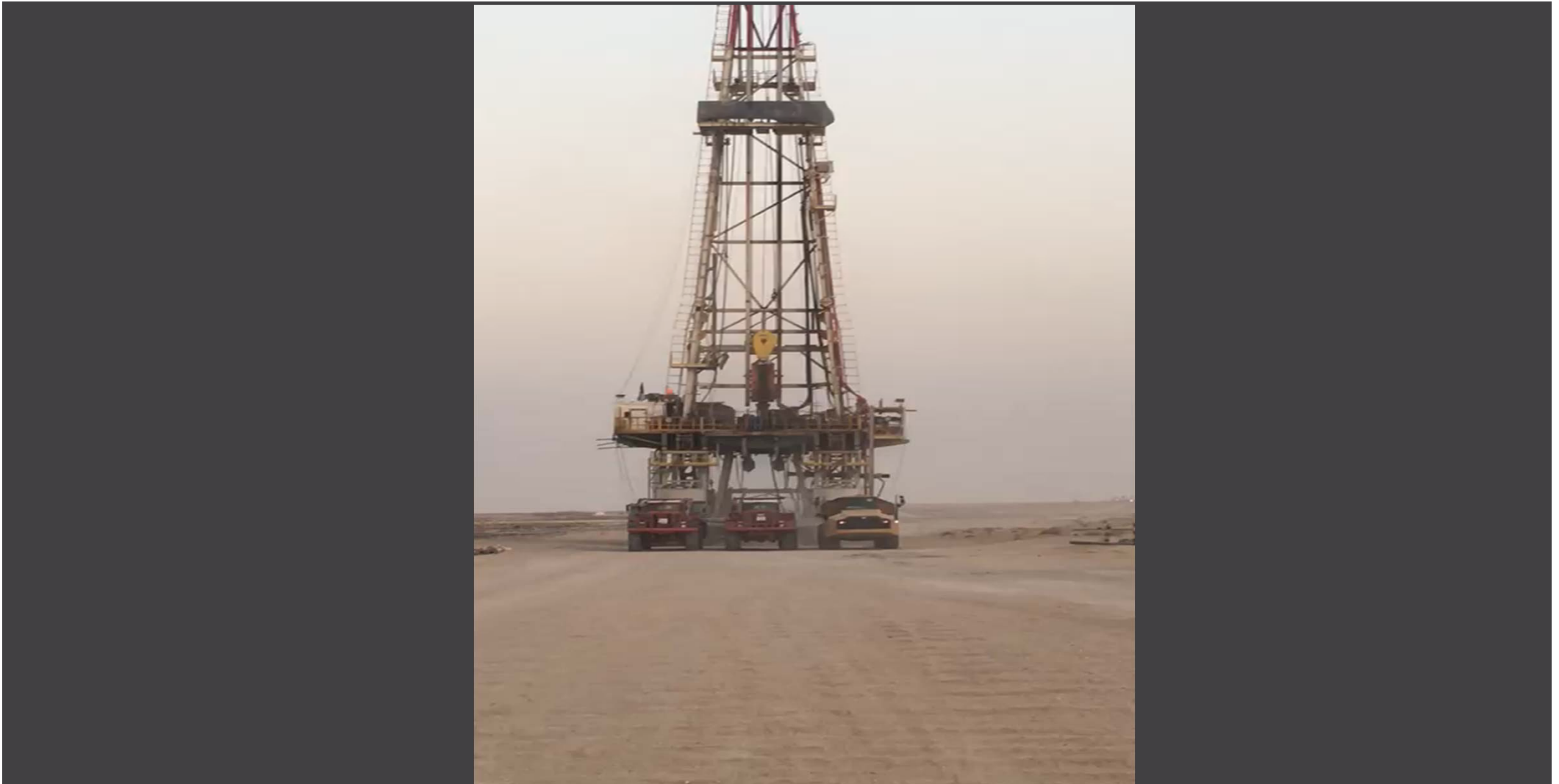
# Jacking & Skidding Projects by MJ.



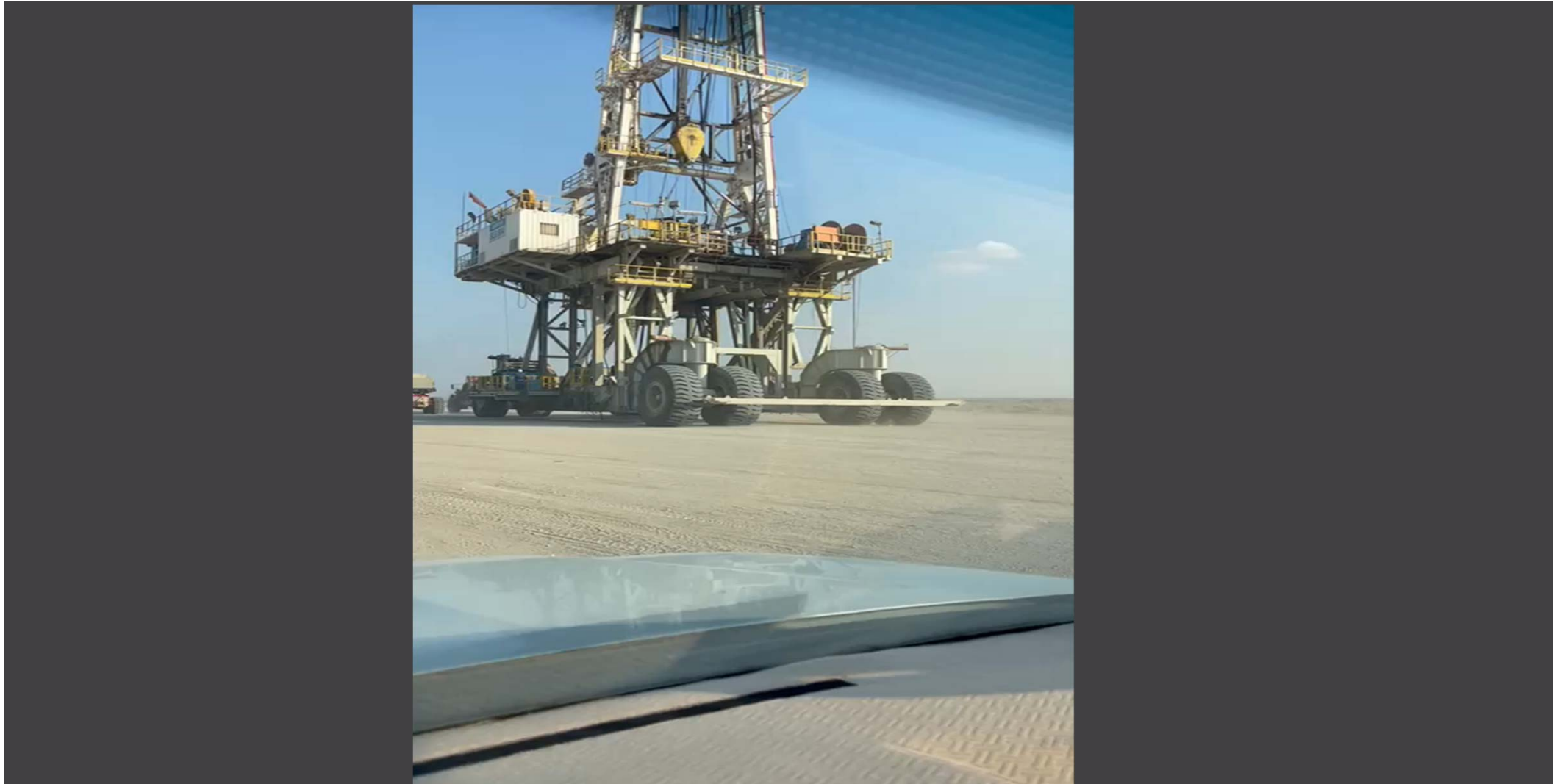
## Heavy Haulage Projects by MJ.





## RIG Projects by MJ.



# RIG Projects by MJ.



# Heavy Haulage Engineering Calculations by MJ.

Title:	Calculation on Road Transportation stability			 
Client:				
Project:	Date: 18-01-2024	Prepared: Alpeah	Rev: 0	

### CALCULATION ON ROAD TRANSPORTATION STABILITY

Item no.	Trailer configuration: Modular Single		
SPMT DATA		LOAD DATA	
trailer height (Th)	1192 mm	load weight (Wl)	101 tons
trailer width (Tw)	3000 mm	load length (Ll)	20700 mm
trailer length (Tl)	18000 mm	load height (Lh)	9100 mm
trailer axle lines	12 nos.	load width (Lw)	6800 mm
trailer weight (Wt)	41 tons	COG height (CGh)	2850 mm
trailer CG height (Cgy)	900 mm	transverse CG offset (CGT)	0 mm
axle spacing	1500 mm	longitudinal CG offset (CGl)	0 mm
type of suspension	3 points	PPU weight & others (Wa)	0 tons
axle base (Sa)	1500 mm	gravitation acc. (g)	9.8 m/s <sup>2</sup>
axle center height (Ah)	1100 mm	average wind pressure (Wp)	11.8 m/s <sup>2</sup>
max axle pressure (Ap)	16 tons	curve impact (Ci)	2.0 %
trailer speed	5.0 km/hr	Mu steel/wood (Mu)	0.2
max. acceleration (a)	0.5 m/s	transverse road gradient (Mgt)	0.3 deg
max. deceleration (d)	0.5 m/s	longitudinal road gradient (Mgl)	3.0 deg
Tractive force	30 tons/mod.	chain capacity	5.0 tons/ea
Safety stability angle	5.5 degree		



### TRACTIVE EFFORT CALCULATION:

At 1km/hr we assumed the following:

Rolling resistance	3.00 %
Acceleration factor	1.00 %

Data:

Weight of PPU & others	0 tons	Tractive effort to Restart on gradient	=	6	<	35
Weight of Cargo	101 tons	Tractive effort to maintain mov't on gradient	=	9	<	35
Weight of trailer	41 tons	Tractive effort available	=	35	TONS	
Total weight	142 tons	Trailer actual tractive force	=	38	TONS	
maximum Gradient	3.0 deg.	Therefore:				
		Enough tractive force to Restart on gradient				
		Enough tractive force to maintain on gradient				

Title:	Calculation on Road Transportation stability			 
Client:				
Project:	Date: 18-01-2024	Prepared: Alpeah	Rev: 0	

### GROUND LOAD CALCULATION:

Wtot=weight of cargo+PPU+trailer	=	142	tons
Load per axle line=	total weight/ no. of axle lines	=	11.8 tons
Load per axle=	total weight/ no. of axles	=	5.9 tons
Load per tyre=	total weight/no. of tyre	=	3.0 tons
Ground load pressure	=	2.2	tons/m <sup>2</sup>

### LASHING CALCULATION:

Acceleration Forces on Max Ground Slope:

F	= (Wl + Wa) * sin ( Mgl )	=	5.29	mTon
N	= (Wl + Wa) * cos ( Mgl )	=	100.86	mTon
R1	= (((Wl + Wa) * a ) / g) + F - ( Mu * N )	=	-9.7	mTon
C1	= R1 / cc ( If R1 negative, no chains required )	=	0	chain(s) required in front direction

Deceleration Forces on Max Ground Slope:

F	= (Wl + Wa) * sin ( Mgl )	=	5.29	mTon
N	= (Wl + Wa) * cos ( Mgl )	=	100.86	mTon
R2	= (((Wl + Wa) * d ) / g) + F - ( Mu * N )	=	-9.7	mTon
C2	= R2 / cc ( If R2 negative, no chains required )	=	0	chain(s) required in rear direction

Chains required for lashing: = C1 + C2 = 0 chain(s) required

Single system, load and trailer (Y/N)? :  y = Wt / cc = 13 chain(s) required

### GEOMETRIC STABILITY CALCULATION:

CGtoth	= ((Wl*CG) + ((Wl+Wa)*(CGh+Th)))/Wto	2876	mm	(C.O.G. of Trailer + Load + Beams)
CGtott	= ((Wl + Wa) * CGt) / Wtot	0	mm	out of center
CGtotl	= ((Wl + Wa) * CGl) / Wtot	0	mm	out of center
Ltri	= SQRT((0.5*Sa) <sup>2</sup> + (0.5*TI) <sup>2</sup> )	9000	mm	Length of stability triangle


Longitudinal stability angle

Aminl	= (TI/2 - 0.5*GroupD - CGtott)	4500	mm	CGtott towards 2 groups (C&D)
Lng. Cam	= Aminl / (CGtoth - Ah)	1.8035	-	Longitudinal Stability Camber
Lng. Grad	= arctan (Lng. Cam.)	61.0	deg.	Max. longitudinal Gradient on Stability
		OK!		

Transverse stability angle

Amint	= (Sa/2)-CGt	750	mm	CGtott towards groups (A&D)
Tr. Cam	= Aminl / (CGtoth-Ah)	0.3006	-	Transverse Stability Camber
Tr. Grad	= arctan (Tr. Cam.)	16.7	deg.	Max. Transverse Gradient on Stability
		OK!		

# Heavy Haulage Engineering Calculations by MJ.

Title:	Calculation on Road Transportation stability				
Client:					
Project:		Date:	18-01-2024	Prepared:	Alpeesh Rev. 0
<b>STABILITY BASED ON HYDRAULIC LIMITATION.</b>					
CGtoth	= ((Wt*CG) + ((Wl+Wa)*(CGh+Th)))/Wtot	=	2876	mm	C.O.G. of Trailer + Load + Beams
CGtott	= ((Wl + Wa) * CGt) / Wtot	=	0	mm	Transverse out of center
CGtotl	= ((Wl + Wa) * CGl) / Wtot	=	0	mm	Longitudinal out of center
Fwt	= Wp * (Transverse Load Surface * Tf)	=	2.67	mTon	Transverse Wind Force
Mwt	= Fwt * ((0.5 * Lh) + Th)	=	15.34	mTon-m	Transverse Wind Moment
Fwl	= Wp * (Longitudinal Load Surface * Tf)	=	0.88	mTon	Longitudinal Wind Force
Mwl	= Fwl * ((0.5 * Lh) + Th)	=	5.04	mTon-m	Longitudinal Wind Moment
Mt	= CGt * (Wl + Wa)	=	0.00	mTon-m	Moment due to transverse loadoffset
Ml	= CGl * (Wl + Wa)	=	0.00	mTon-m	Moment due to longitudinal loadoffset
Mci	= Ci * Wtot * (CGtoth - Ah)	=	0.00	mTon-m	Curve Impact Moment on Trailer
Ma/d	= (( Wtot * a ) / g ) * (CGtoth - Ah)	=	20.47	mTon-m	Acceleration / Deceleration Impact
Mroadl	= tan(Mgl) * (CGtoth - Ah) * Wtot	=	14.03	mTon-m	Moment due to road gradient
Mroadt	= tan(Mgt) * (CGtoth - Ah) * Wtot	=	14.03	mTon-m	Moment due to road gradient
<b>Longitudinal stability on strength</b>					
	Group A	Group B	Group C	Group D	
	6.71	6.71	6.71	6.71	mTon / axle
	0.37	0.37	0.37	0.37	mTon / axle (due to moments)
	7.07	7.07	7.07	7.07	mTon / axle (Fmax.)
	OK !	OK !	OK !	OK !	
Lng. Cam	= ((Ap*0.5*Ti/Fmax*2)-(0.5*Ti/2))/(CGtoth-Ah)			2.2755	Longitudinal Stability Camber
Lng. Grad	= arctan (Lng. Cam.)			66.3	deg. Max. Longitudinal Gradient on strength
				OK !	
<b>Transverse stability on strength</b>					
	Group A	Group B	Group C	Group D	
	6.71	6.71	6.71	6.71	mTon / axle
	1.63	1.63	1.63	1.63	mTon / axle (due to moments)
	8.34	8.34	8.34	8.34	mTon / axle (Fmax.)
	OK !	OK !	OK !	OK !	
Tr. Cam.	= ((Ap*Sa/Fmax*2)-(0.5*Sa))/(CGtoth-Ah)			0.2761	Transverse Stability Camber
Tr. Grad	= arctan (Tr. Cam.)			15.4	deg. Max. Transverse Gradient on strength
				OK !	
<b>CONCLUSION:</b>					
• STABILITY LIMIT:	STABILITY ON STRENGTH			15.4	deg.
• LASHING CHAINS REQUIRED:				13	Nos.
• GROUND BEARING PRESSURE :				2.2	mTon/m <sup>2</sup>

# Installation of Vessels by MJ.

## CRANES

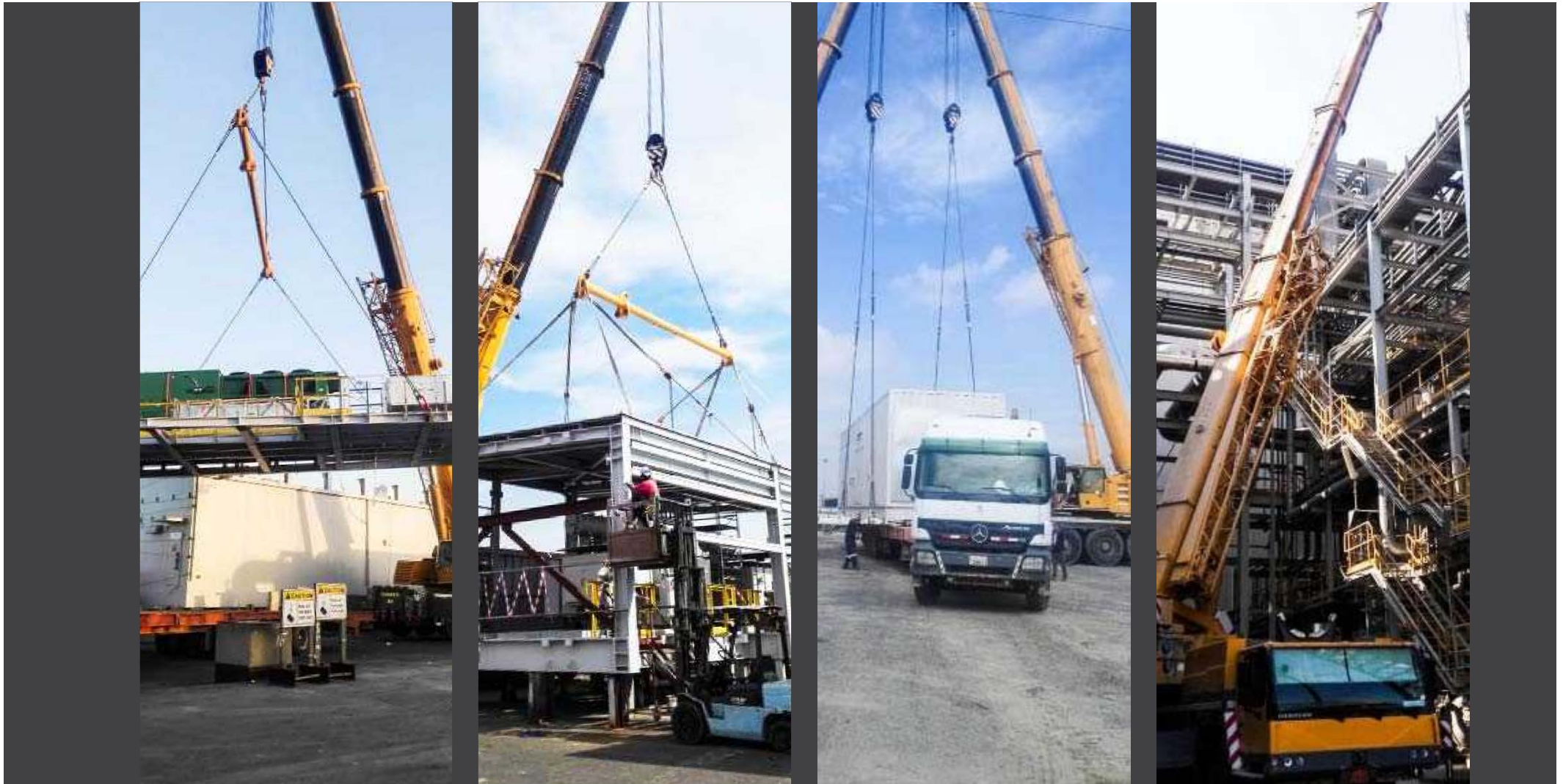
At Mohammed Al Jarrallah Equipment and Petroleum Services Company WLL., We have one of the largest selections of Cranes (Rough Terrain (RT), All Terrain (AT) & Crawler Crane (CC)) for the last 34 years, all of our Cranes are equipped with safety devices as per the International Standards, All of our cranes are well - maintained and are from the best manufacturers in the world. (Liebherr, Tadano, Terex, Kato etc.)

MJ. have experienced crew to manage all kinds of lifting, erection & material handling work such as Operator, Rigger, Maintenance team, Supervisors & Engineers.





## Erection of Over Dimensional & Specially Designed Cargos by MJ. Cranes



## HEALTH, SAFETY & ENVIRONMENT

As MJ. We feel responsible for people, the environment and the delivery of high-quality services. We offer a safe working environment to everyone involved in our activities: employees, partners, subcontractors, suppliers and other parties concerned. In return, we demand from them an active contribution to the safe performance of each task. We also expect them to be respectful to each other, the environment and its resources. By doing so we jointly strive for a healthy company that is ready for the future.

A high Health, Safety, Environment and Quality (HSEQ) standard is an important pillar of our success. We commit ourselves to a safer and healthier working environment. In case our work may have an impact on the environment we review all possible effects prior to the start of activities. We plan and execute all activities in such a way that negative effects are limited as much as possible.

As a minimum, our companies comply with all oil field standards and applicable laws and regulations in their fields of operation. We expect the same from our partners and subcontractors.



## **Brand New Equipment's for Rig move / Transportation / Erection / Material handling / Rental.**

1. Trucks with 4x4, 6x4, 6x6 & 8x4 configurations
2. Trailer (Lowbed, Flatbed, Drop Deck & Extendable up to 70m)
3. Cranes. (Mobile & Crawler cranes)
4. Wheel Loaders
5. Fork Lifts
6. Excavators



## Certifications to MJ.



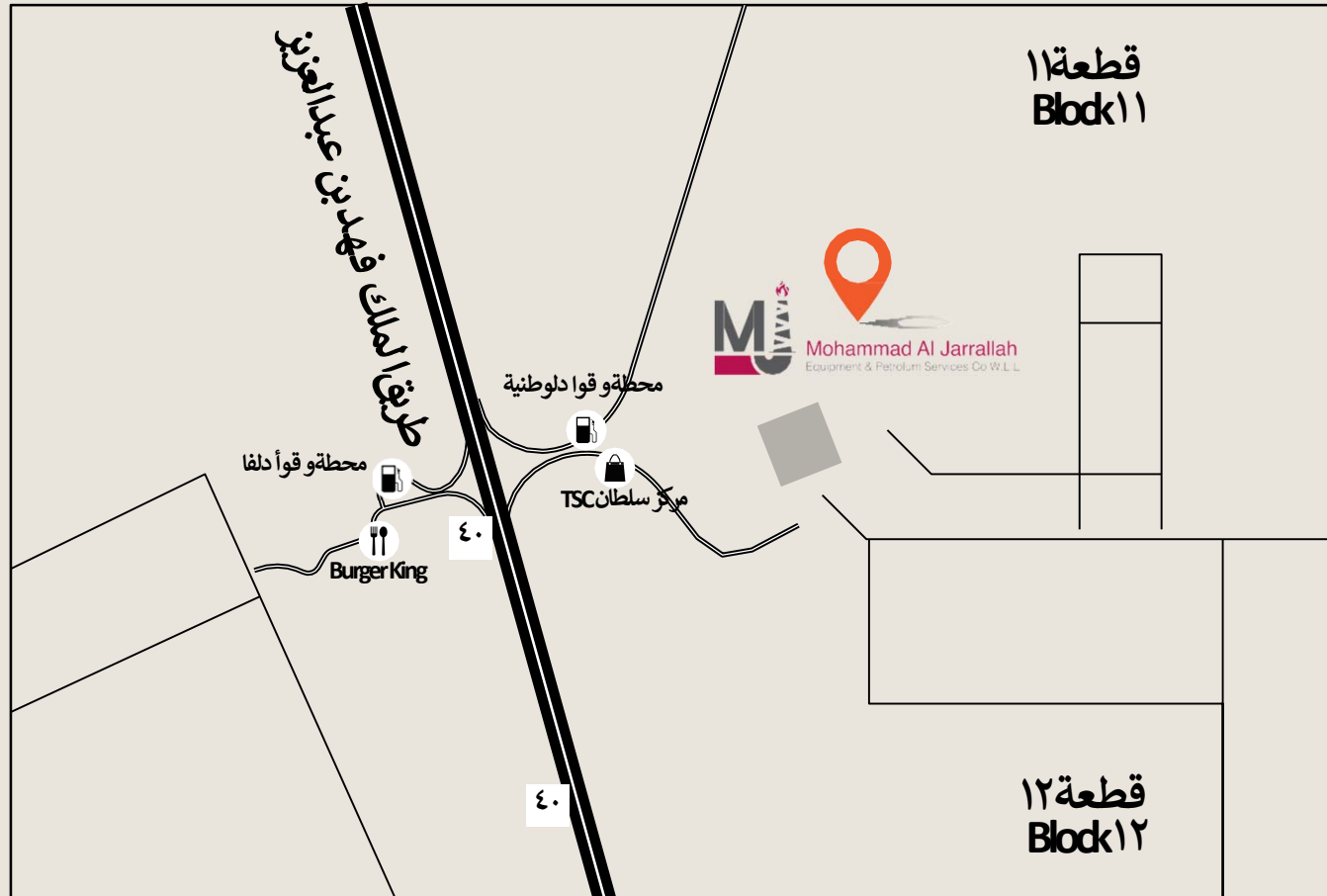
## Customers

Mohammad Al Jarrallah Equipment and Petroleum Services Company W.L.L. would like to  
**Thank all our esteemed clients for the tremendous support in building our company.**





**OPERATIONAL Office,  
Shuaiba Industrial Area. Behind KNPC Fuel Station.**





# Mohammad Al Jarrallah

Equipment & Petroleum Services Company W.L.L.

KUWAIT | SAUDI ARABIA | BAHRAIN | QATAR

## Registered Office

Fahaheel Commercial Complex,  
Block 7, Plot 6704, Mariam Commercial Complex,  
Coupon No.4, Office No.2, Floor7,  
Street 66, Fahaheel,  
Kuwait.

Telephone : +965 - 23934091

Mobile : +965 - 99034771 / 90002336 / 98855512  
94078931 / 94125927 / 98855545

Fax : +965 - 23934094

Mail : [info@mj-kw.com](mailto:info@mj-kw.com) [jarallah@mj-kw.com](mailto:jarallah@mj-kw.com) [logistic@mj-kw.com](mailto:logistic@mj-kw.com) [sales@mj-kw.com](mailto:sales@mj-kw.com)

Web : [www.mj-kw.com](http://www.mj-kw.com)