



Mohammad Al Jarrallah

Equipment & Petroleum Services Company W.L.L.
KUWAIT | SAUDI ARABIA | BAHRAIN | QATAR

COMPANY PROFILE



INTRODUCTION

The name of **Mohammad Salem Jarallah Al-Marri** is on the peak in business of Transportation around Kuwait for the past 34 years. Mohammad Al Jarallah appeared in Transport world as his first establishment “Mohammad Al Jarrallah Goods Transport” in 1989.

In 2014 **Mohammad Al Jarrallah Equipment and Petroleum Services Company W.L.L.** & Mohammad Al-Jarrallah Transport and Logistics Services W.L.L. was established. MJ. is a member of IADC & approved ISO 14001:2015 (The Environmental Management System), ISO 9001:2008 The Quality Management System, OHSAS 18001:2007 (The Occupational Health and Safety Management) certified company.

Mohammad Al Jarrallah Equipment and Petroleum Services Company W.L.L. is an expert when it comes to RIG Moves, Heavy Lift Transportation, Jacking & Skidding. Custom Clearance, Freight Forwarding, Providing TOTAL Logistic & Lifting Services to drilling contractors and operators by





Moving their land RIG, Camp from one drill site to another. Rigs are disassembled, transported and assembled in an efficient and safe way by experienced rig move crews, reducing down time to a minimum.

MJEPS Company owns an extensive fleet of road transport and lifting assets which can all be mobilized to carry out a rig move very efficiently. This includes Kenworth Trucks, Cranes, Forklift, Trailers, (Low bed, High bed, Drop Deck & Extendable up to 70m), & Heavy Rigging equipment. By combining the expertise of MJ. you will benefit from our 'door-to-door' service. In more remote area's experienced and certified operators are used for lifting and transportation, all with a proven track record.

MJEPS Having a very strong safety record and strong reputation with the clients world wide.



OUR MISSION

To establish Mohammad Al Jarrallah for Equipment and Petroleum Services Company W.L.L. as preferred choice of Customers, known for our quality, adaptability and flexibility for meeting their field services, rig moves, well site construction, crane, heavy haul and logistics needs.

OUR VISION

To be the recognized leader in equipment and petroleum services in International oil and gas markets in which we operate.

VALUES

Safety is a number one priority at Mohammad Al Jarrallah Equipment and Petroleum Services Company W.L.L. through highly-trained and experienced personnel, we establish strong customer relationships, striving to deliver quality service that addresses their unique needs.

We are flexible as we approach every challenge, we operate with highest degree with ethics. We will honor our commitments, treat everyone to respect and meet all regulations.





Mohammed AlJarrallah



GLA
Mohammad Al-Jarrallah Equipment and
Petroleum Services Company W.L.L.
Membership ID: 158707
www.gla.com

Our Services

- **Rig Movements within a country (well to well)**
Mobilization of land rigs within GCC by road / overseas / by sea
- **Shipping, Transportation, Logistics & Freight Forwarding**
- **Custom Clearance Brokerage at Air Ports / Sea Ports / Borders**
- **Heavy Lift and Project Cargo (ODC / OWC) Services**
- **Rental of Equipment Services**
- **Warehousing & Distribution / Supply Chain Management**
- **Safety Management**
- **Jacking, Rolling & Skidding**
- **International Transportation (GCC)**
- **Civil Work**

Rig moved by MJ.



Our Team is constantly committed to adhering the oilfield highest standards, as well as our own high standard of delivering quality, timely results.

We are ISO certified company. Our experts have experience in moving RIGS from any origin to final destination (Globally) which include:

- Inspection Survey
- Shipping Plan
- Documentation
- Loading
- Packing and Securing
- Safety

Mohammed AlJarrallah

GLA
 Mohammad Al-Jarrallah Equipment and
 Petroleum Services Company W.L.L.
 Membership ID: 158797
 www.gla.com



RIG MOVE BY MJ.

MJ. Rig move services is specialized and is far excellent in oil and gas logistics, begins with safety, planning and performance around the key equipment for a customized logistics solution. Our 24x7 personal commitment to oil and gas logistics service needs to include not only transport service but include Drilling rig move, Super Rig Move, Work Over, Casing, Heavy Haulage. Our team's knowledge and expertise of oil and gas domain equipment and supplies, rigs or packaged goods, and heavy lift transports are delivered where and when you need .



OUR RIG MOVE CAPACITY:

- ▶ Pulling Unit - 250 HP to 650 HP
- ▶ Work Over - 250 HP to 750 HP
- ▶ Drilling Rigs - 750 HP to 2000 HP
- ▶ Deep Drilling Rigs - Up to 3000 HP



Rig Mast moved by MJ.



OUR EQUIPMENTS AND FLEET DETAILS:

We at Mohammad Al Jarrallah Equipment and Petroleum Services Company W.L.L. has been providing Drilling companies, construction, industrial companies, with rental heavy equipment's. Our reliable service and dedication have helped our Clients to get their job done efficiently, safely and timely.





The company features a diverse and specialized fleet of heavy equipments, mobile cranes and a full range of heavy equipment that includes:

- Trailers (Lowbed, Flatbed, Drop Deck and Extendable up to 70m)
- Multi Axle lines with Heavy Lift Prime movers
- Cranes (Mobile, RT & Crawler)
- Kenworth & Peterbilt Trucks
- Boom Truck
- Wheel Loaders
- Tankers (Diesel & Water)
- Graders
- Dump Trucks
- Excavator
- Dump Trucks
- Fork Lifts
- Bobcat
- JCB
- Stackers
- Escort Vehicles (for Over Dimensional & Over Weight Cargos)
- Scissor Lift (Electric & Diesel)
- Heavy Duty Power Packs
- Jacking & Skidding

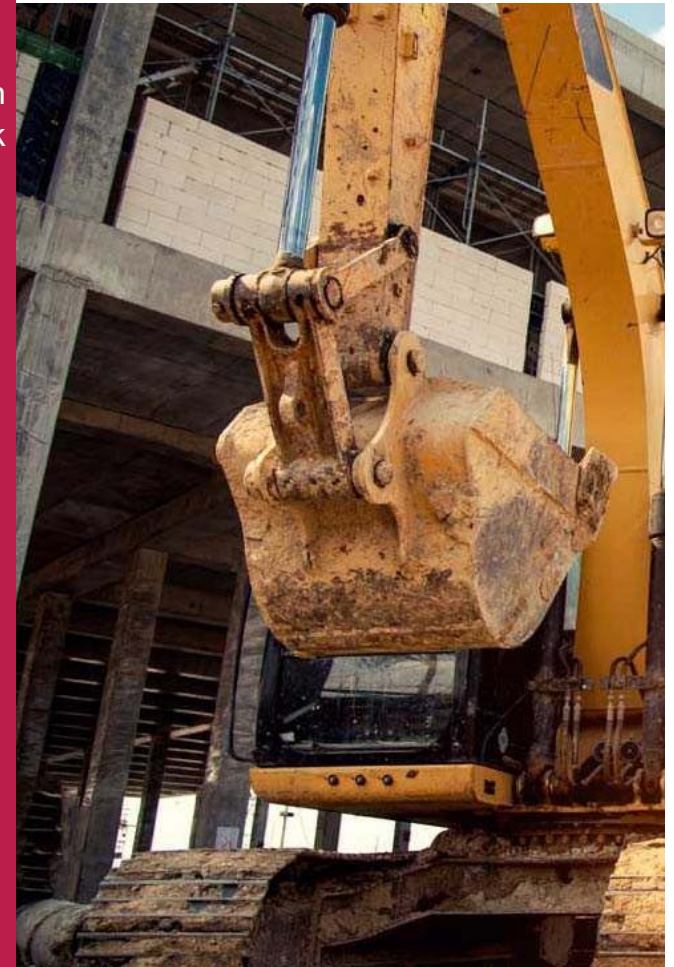


Constructions

Our consultants are ready to provide on-site supervision for all types of construction projects. We're available for every aspect, from location placement to setting tank batteries.

Qualified Consultants Available for Every Aspect

- Staking Locations
- Construction of Drilling Locations
- Construction of Compressor Pads
- Pipeline Installation
- Surface Equipment Installation
- Facilities Design and Construction
- Environmental Assessment and Permitting
- Wellsite Reclamation
- Preparation Oil Well RIG Locations.
- Preparation of Heavy Lift Transportation routes (Temporary & Permanent).



Erection work by MJ.

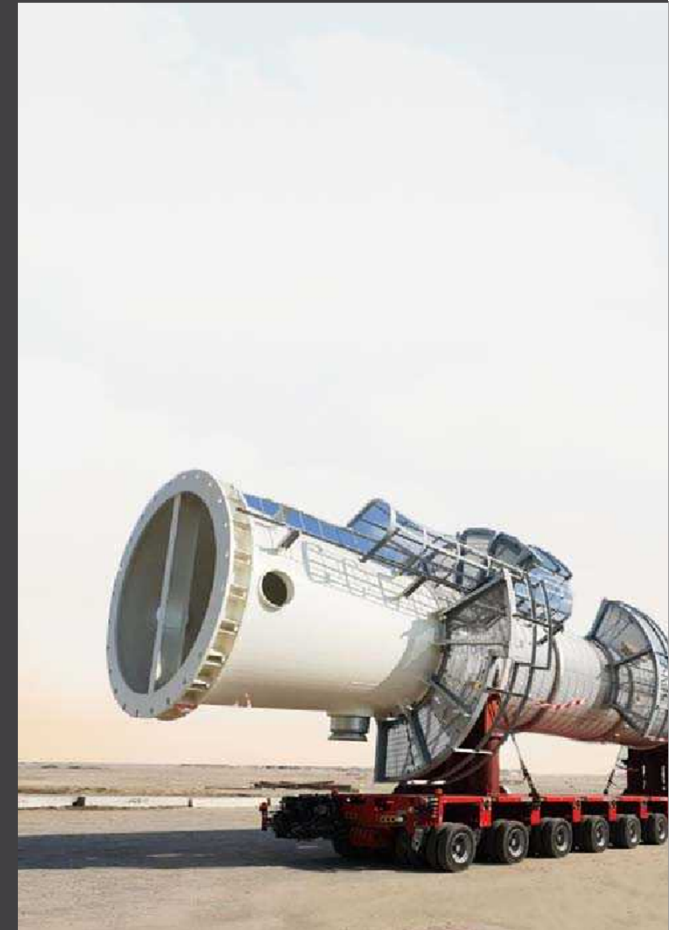


Heavy Haulage

MJ. Prides itself as having one of the most advanced Heavy Haul fleets available. MJ. has specialized over the road transport equipment capable of completing any task on hand. Our knowledgeable crews ensure loads are following all regulations.

We can provide a solution for any of your heavy transport needs including Jacking & Skidding.

In addition, We have specialized Multi Axle lines with Heavy Lift Prime movers, Turn Tables, Bolster, Spacers, Lowbed, Extendable, Drop Deck and Flatbed trailers.



Heavy Haulage Projects by MJ.



Jacking & Skidding

Due to space limitations on Project Site, a crane is not constantly an option on site. In such cases, even the largest objects can be handled by Jacking them up and Skidding Cargo into place along rails, rollers.

We Operate a multi-functional synchronous hydraulic heavy lift jacking system capable of monitoring the piston of the load between the four jacks to within one mm tolerance. This innovative hydraulic equipment allows us to raise and slide industrial machinery such as Transformer, Chillers, Filters in a controlled manner, indoors or outdoors / inside basement and on floors.

With the option of jacking to lift and lower and skidding to push and pull, we can load directly to trailers or relocate industrial machinery such as transformers, Chillers, Filters and components in confined spaces.

MJs Highly experienced team has served some of the most reputed companies in the Power, Energy, Oil, Gas & Petrochemical Industries in the region.

Jacking & Skidding by MJ.



Installation of Vessels by MJ.

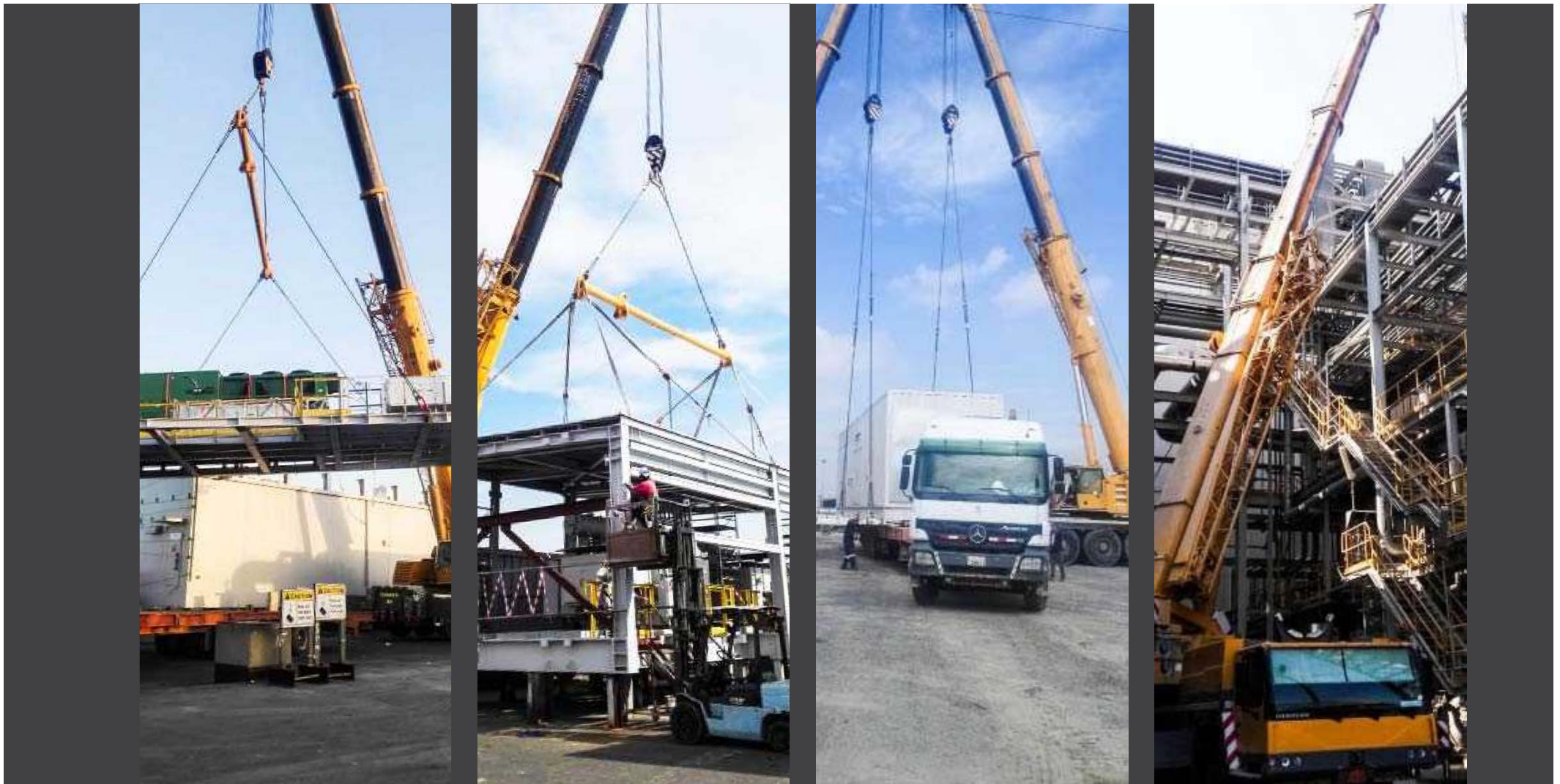
CRANES

At Mohammed Al Jarrallah Equipment and Petroleum Services Company WLL., We have one of the largest selections of Cranes (Rough Terrain (RT), All Terrain (AT) & Crawler Crane (CC)) for the last 34 years, all of our Cranes are equipped with safety devices as per the International Standards, All of our cranes are well-maintained and are from the best manufacturers in the world. (Liebherr, Tadano, Terex, Kato etc.)

MJ. have experienced crew to manage all kinds of lifting, erection & material handling work such as Operator, Rigger, Maintenance team, Supervisors & Engineers.



Erection of Over Dimensional & Specially Designed Cargos by MJ. Cranes



HEALTH, SAFETY & ENVIRONMENT

As MJ. We feel responsible for people, the environment and the delivery of high-quality services. We offer a safe working environment to everyone involved in our activities: employees, partners, subcontractors, suppliers and other parties concerned. In return, we demand from them an active contribution to the safe performance of each task. We also expect them to be respectful to each other, the environment and its resources. By doing so we jointly strive for a healthy company that is ready for the future.

A high Health, Safety, Environment and Quality (HSEQ) standard is an important pillar of our success. We commit ourselves to a safer and healthier working environment. In case our work may have an impact on the environment we review all possible effects prior to the start of activities. We plan and execute all activities in such a way that negative effects are limited as much as possible.

As a minimum, our companies comply with all oil field standards and applicable laws and regulations in their fields of operation. We expect the same from our partners and subcontractors.



Brand New Equipment's for Rig move / Transportation / Erection / Material handling / Rental.

1. Trucks with 4x4, 6x4, 6x6 & 8x4 configurations
2. Trailer (Lowbed, Flatbed, Drop Deck & Extendable up to 70m)
3. Cranes. (Mobile & Crawler cranes)
4. Wheel Loaders
5. Fork Lifts
6. Excavators
7. Scissor Lift



Approvals to MJ.

Mohammad Al Jarrallah Equipment and Petroleum Services Company W.L.L. is approved by,

1. Kuwait Oil Company (under categories 48 & 118)
2. Kuwait National Petroleum Company
3. Wafra Joint Operation
4. EQUATE Petrochemical Company K.S.C.C.
5. Kuwait Ports Authority
6. Al Kout Industrial Projects Company
7. Ministry of Defense (Kuwait)
8. Ministry of Electricity and Water (Kuwait)
9. Ministry of Health (Kuwait)
10. Ministry of Interior (Kuwait)
11. Ministry of Public Works (Kuwait)
12. Kuwait Aviation Fueling Company – KAFCO
13. Kuwait Fire Force



Certifications to MJ.



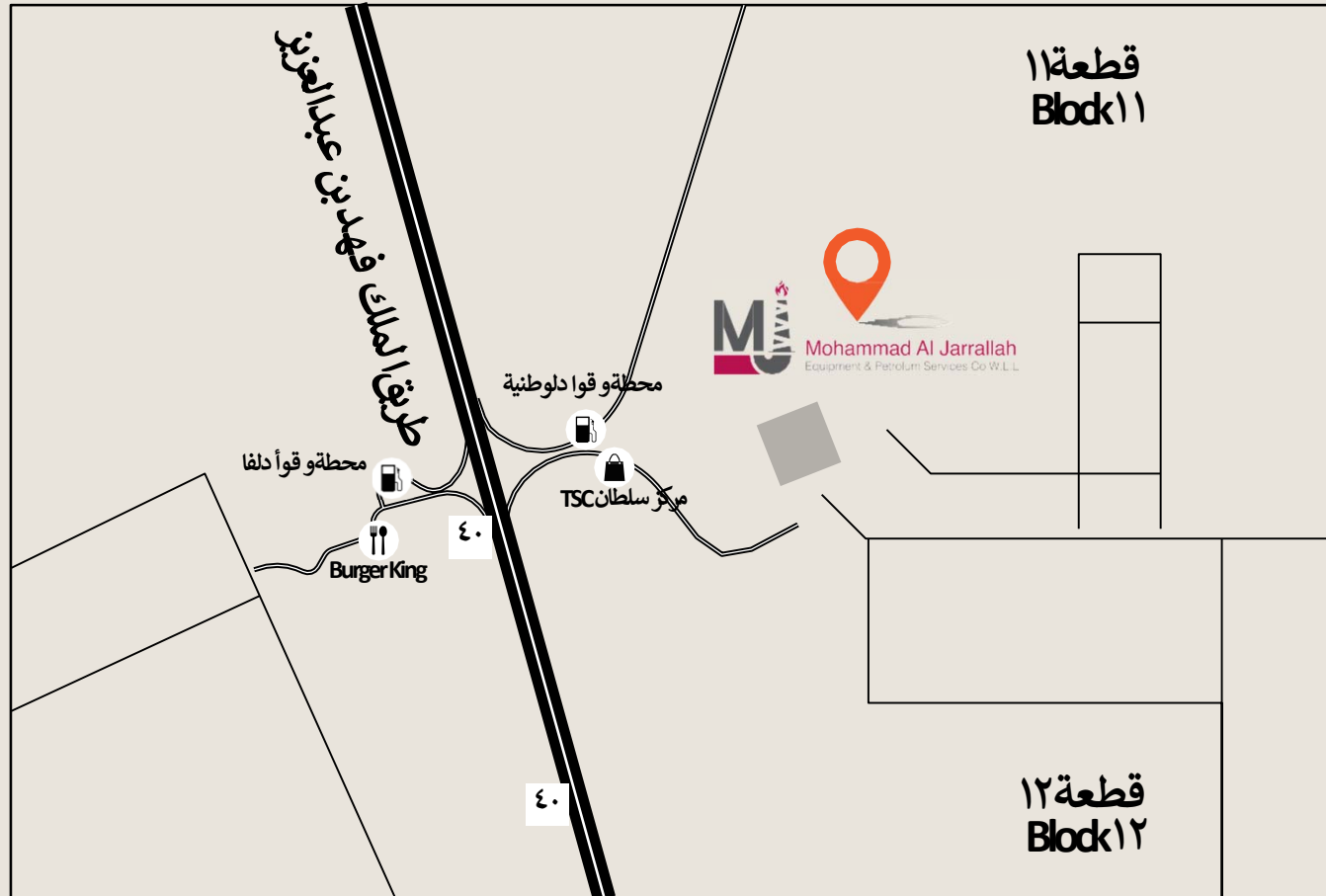
Customers

Mohammad Al Jarrallah Equipment and Petroleum Services Company W.L.L. would like to
Thank all our esteemed clients for the tremendous support in building our company.





**OPERATIONAL Office,
Shuaiba Industrial Area. Behind KNPC Fuel Station.**





Mohammad Al Jarrallah

Equipment & Petroleum Services Company W.L.L.

KUWAIT | SAUDI ARABIA | BAHRAIN | QATAR

Registered Office

Fahaheel Commercial Complex,
Block 7, Plot 6704, Mariam Commercial Complex,
Coupon No.4, Office No.2, Floor7,
Street 66, Fahaheel,
Kuwait.

Telephone : +965 - 23934091

Mobile : +965 - 99034771 / 90002336 / 98855512
94078931 / 94125927 / 98855545

Fax : +965 - 23934094

Mail : info@mj-kw.com jarallah@mj-kw.com logistic@mj-kw.com sales@mj-kw.com

Web : www.mj-kw.com